



## Support area

<http://www.schmidhuber.com> (from calendar week 34/09)

### Registration

You must register to get access to the extended downloads (e.g. EuroFib for Windows update). Please click „**Customer-Login**“.

**Schmidhuber EDV**  
Software GmbH  
...let's make business together!

Customer-Login | FastViewer | Language:

Hotline: +43 1 2700531 | Search:

Home | Products | References | Support | Reseller | About us

### Software solutions for your enterprise

We are an internationally active enterprise with headquarters in Austria. Through our long-established activity in the European region, we have succeeded in establishing a **network of resellers** who ensure our customers on-site care.

As a **Premium Data Group** member, we offer everything from stand-alone to comprehensive solutions with which we can optimally support you in the entire operation.

With our **range of versatile software solutions**, we cover nearly all areas in enterprises of different sizes, whether sole proprietorship or international concern.

[> Inquire now!](#)

**Products**  
As a supplier of complete solutions covering the entire commercial operation area, we offer numerous products.  
[> Learn more](#)

**References**  
Many well-known companies have already put their trust in us.  
[> Learn more](#)

**News**  
**EuroFib seminar 2009**  
[Registration and informations](#)  
**EuroNews are available:**  
[Click here...](#)  
**New website online:**  
[Description for support/download area](#)  
[Newsletter subscription from EuroFib](#)

On the next window click „**here**“.

**Customer-Login**

**Login**

Email\*

Password\*

☐ Remember login on this computer

[> Login](#)

If you have **lost your password** just click [here](#).

If you want to **register** click [here](#)



Please fill in the necessary fields and click „Register“.

**Customer registration**

Customer registration

Salutation\* ☒ Mr. ☐ Mrs.

Title

Firstname\*

Lastname\*

Licence code\*

Email\*

Password\*

Password confirmation\*

Newsletter: ☒ I'd like to receive all future information by email.

**> Register**

Back to the [login](#).

**WARNING!**

An previous entry in our mailing list won't be assumed!

Would you like to get informations like newsletter, euronews, invitations to seminars, ... via e-mail, activate the checkbox **News!**

An additional registration to our mailing list is available from EuroFib for Windows.

Please notice, that our personnel has to verify and activate your registration.

A valid maintenance contract is required for the activation.

You can find the „**License code**“ of your EuroFib for Windows license on the loginmask...

**Logon Eurofib for Windows**

User

Password

Client  Accounting year

Schmidhuber EDV Software  
A-1210 Wien  
01.01.2009 - 31.12.2009

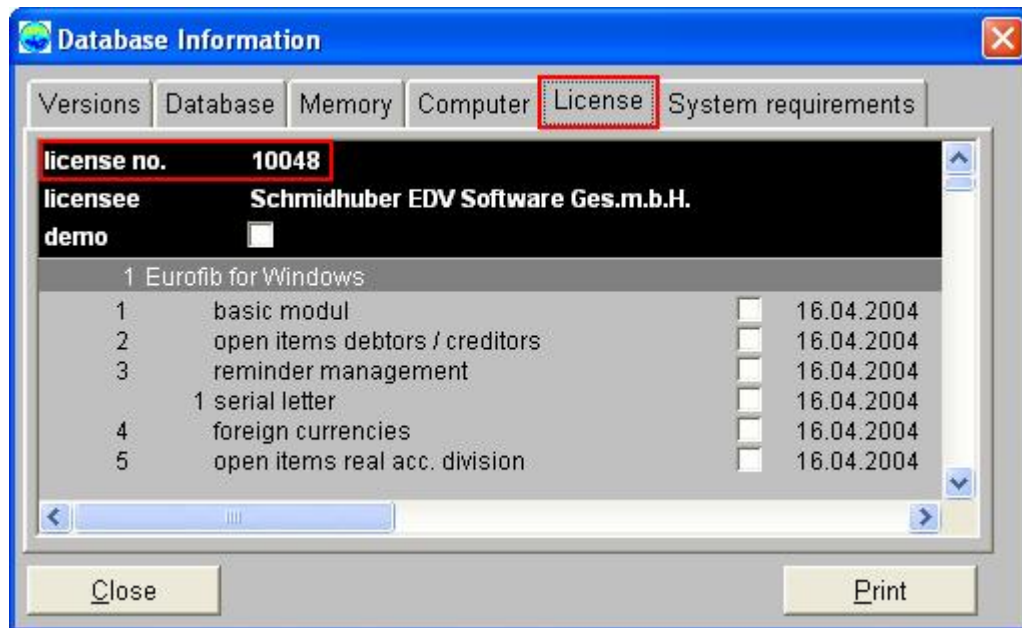
License  
Licensed to **Schmidhuber EDV Software Ges.m.b.H.**  
Number **10048** from **16.04.2004**

Copyright© Schmidhuber EDV Software Ges.m.b.H. [www.schmidhuber.com](http://www.schmidhuber.com)

ODBC / eurofib Version: 6.4.932 12.08.2009 12:24:11



...or within the application under the menu item „Help => Version“ on the tabpage „Licence“.



After the successful registration you will get an e-mail with your login details from our system automatically.



**Please notice, that your account is inactive at this time!**

Our personnel will also be informed about your registration automatically. They will check it as soon as possible. Please be patient.

When your account has been verified and activated, you will get an e-mail from our system again.





## Login

You must login to get access to the extended downloads (e.g. EuroFib for Windows update). Please click „Customer-Login“.

**Schmidhuber EDV**  
Software GmbH  
...let's make business together!

[Customer-Login](#) [FastViewer](#) Language:

Hotline: +43 1 2700531 | Search:

[Home](#) [Products](#) [References](#) [Support](#) [Reseller](#) [About us](#)

### Software solutions for your enterprise

We are an internationally active enterprise with headquarters in Austria. Through our long-established activity in the European region, we have succeeded in establishing a **network of resellers** who ensure our customers on-site care.

As a **Premium Data Group** member, we offer everything from stand-alone to comprehensive solutions with which we can optimally support you in the entire operation.

With our **range of versatile software solutions**, we cover nearly all areas in enterprises of different sizes, whether sole proprietorship or international concern.

[> Inquire now!](#)

**Products**  
As a supplier of complete solutions covering the entire commercial operation area, we offer numerous products.  
[> Learn more](#)

**References**  
Many well-known companies have already put their trust in us.  
[> Learn more](#)

**News**  
[EuroFib seminar 2009 Registration and informations](#)  
**EuroNews are available:**  
[Click here...](#)  
**New website online:**  
[Description for support/download area](#)  
[Newsletter subscription from EuroFib](#)

On the next window fill in your personal login details (see chapter “Registration”) and click „Login“.

**Customer-Login**

**Login**

Email\*

Password\*

☐ Remember login on this computer

[> Login](#)

If you have **lost your password** just click [here](#).

If you want to **register** click [here](#)





If you don't want to login on each visit again, activate the checkbox „Remember login on this computer“ on the loginmask.

☒ Remember login on this computer

» Login

You will see your e-mail address and 2 additional functions (“Logout” and “Change password”) instead of “Customer-Login” if your login was successful.

tn@schmidhuber.com [ [Logout](#) | [Change password](#) ] FastViewer Language:

Hotline: +43 1 2700531 Search:  Keyword

Home Products References **Support** Reseller About us

Start > [Support](#) > [Downloads](#) > [Updates](#)

**Support**

- » Downloads
- » **Updates**
- » Documents
- » EuroNews
- » FastViewer
- » Events

Do you have any questions about our products and services? We are at your disposal!

» [Learn more](#)

	<a href="#">Eurofib for Windows update V6.4.941</a>		64,518 kb	12.10.2009 12:10:54
	<a href="#">Eurofib for Windows update V7.1.941</a>		70,102 kb	12.10.2009 13:10:35
	<a href="#">Crystal Reports XI runtime</a>		57,070 kb	17.08.2009
	<a href="#">French language</a>		153 kb	16.10.2009
	<a href="#">English language</a>		244 kb	16.10.2009
	<a href="#">Italian language</a>		115 kb	16.10.2009
	<a href="#">Hungarian language</a>		263 kb	16.10.2009
	<a href="#">Czech language</a>		180 kb	16.10.2009
	<a href="#">Polish language</a>		215 kb	16.10.2009
	<a href="#">Slovakian language</a>		211 kb	16.10.2009
	<a href="#">Russian language</a>		96 kb	16.10.2009

Now you are logged in and you can see and download your extended downloads (EuroFib for Windows Update, ...) under „Support => Downloads“.

To logout click „Abmelden“.



## Password forgotten

Should you forget your password, please do the following steps.  
Click „Customer-Login“.

Schmidhuber EDV Software GmbH  
...let's make business together!

Customer-Login FastViewer Language:

Hotline: +43 1 2700531 Search:  Keyword

Home Products References Support Reseller About us

### Software solutions for your enterprise

We are an internationally active enterprise with headquarters in Austria. Through our long-established activity in the European region, we have succeeded in establishing a **network of resellers** who ensure our customers on-site care.

As a **Premium Data Group** member, we offer everything from stand-alone to comprehensive solutions with which we can optimally support you in the entire operation.

With our **range of versatile software solutions**, we cover nearly all areas in enterprises of different sizes, whether sole proprietorship or international concern.

> Inquire now!

**Products**  
As a supplier of complete solutions covering the entire commercial operation area, we offer numerous products.  
> Learn more

**References**  
Many well-known companies have already put their trust in us.  
> Learn more

**News**  
**EuroFib seminar 2009**  
[Registration and informations](#)  
**EuroNews are available:**  
[Click here...](#)  
**New website online:**  
[Description for support/download area](#)  
[Newsletter subscription from EuroFib](#)

On the next window click „here“.

Customer-Login

Login

Email\*

Password\*

☐ Remember login on this computer

> Login

If you have **lost your password** just click **here**.

If you want to **register** click [here](#)



Fill in your e-mail address on the next window and click „Send password“.

You will get an e-mail with your new generated password from our system automatically.

We aren't able to send your old password, because it is saved encrypted in our database.

Please read the next chapter **Change password** if you want to change the new generated password which you received.



## Change password

If you like to change your password, please do the following steps.  
Click „Kunden-Login“.

**Schmidhuber EDV**  
Software GmbH  
...let's make business together!

Hotline: +43 1 2700531 | Search:  Keyword

Language:

[Home](#) [Products](#) [References](#) [Support](#) [Reseller](#) [About us](#)

## Software solutions for your enterprise

We are an internationally active enterprise with headquarters in Austria. Through our long-established activity in the European region, we have succeeded in establishing a **network of resellers** who ensure our customers on-site care.

As a **Premium Data Group** member, we offer everything from stand-alone to comprehensive solutions with which we can optimally support you in the entire operation.

With our **range of versatile software solutions**, we cover nearly all areas in enterprises of different sizes, whether sole proprietorship or international concern.

[> Inquire now!](#)

**Products**  
As a supplier of complete solutions covering the entire commercial operation area, we offer numerous products.  
[> Learn more](#)

**References**  
Many well-known companies have already put their trust in us.  
[> Learn more](#)

**News**  
**EuroFib seminar 2009**  
[Registration and informations](#)  
**EuroNews are available:**  
[Click here...](#)  
**New website online:**  
[Description for support/download area](#)  
[Newsletter subscription from EuroFib](#)

On the next window fill in your personal login details and click „Login“.

**Customer-Login**

**Login**

Email\*

Password\*

☐ Remember login on this computer

[> Login](#)

If you have **lost your password** just click [here](#).

If you want to **register** click [here](#)





Click „**Passwort ändern**“ within the header after your successful login.

Schmidhuber EDV Software GmbH  
...let's make business together!

tn@schmidhuber.com [Logout] **Change password** | FastViewer | Language:

Hotline: +43 1 2700531 | Search:  Keyword

[Home](#) [Products](#) [References](#) [Support](#) [Reseller](#) [About us](#)

Software solutions for your enterprise

Enter the desired password on the next window.  
You must confirm your password in the second field because of security reasons.  
Now click „**Change password**“.

**Change password**

**Change password**

Password\*

Password confirmation\*

**Change password**

All fields marked with \* must be filled out.

After this procedure your password has been changed and you are able to use your new password for the next login.