



Create printer for PDF export manually

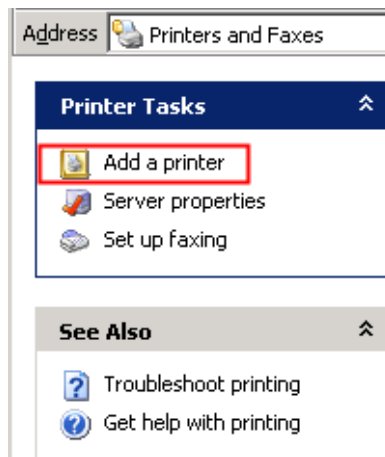
You will need a postscript printer in your operating system to export PDF files from EuroFib for Windows directly. You have to create and configure this printer once.

Windows XP

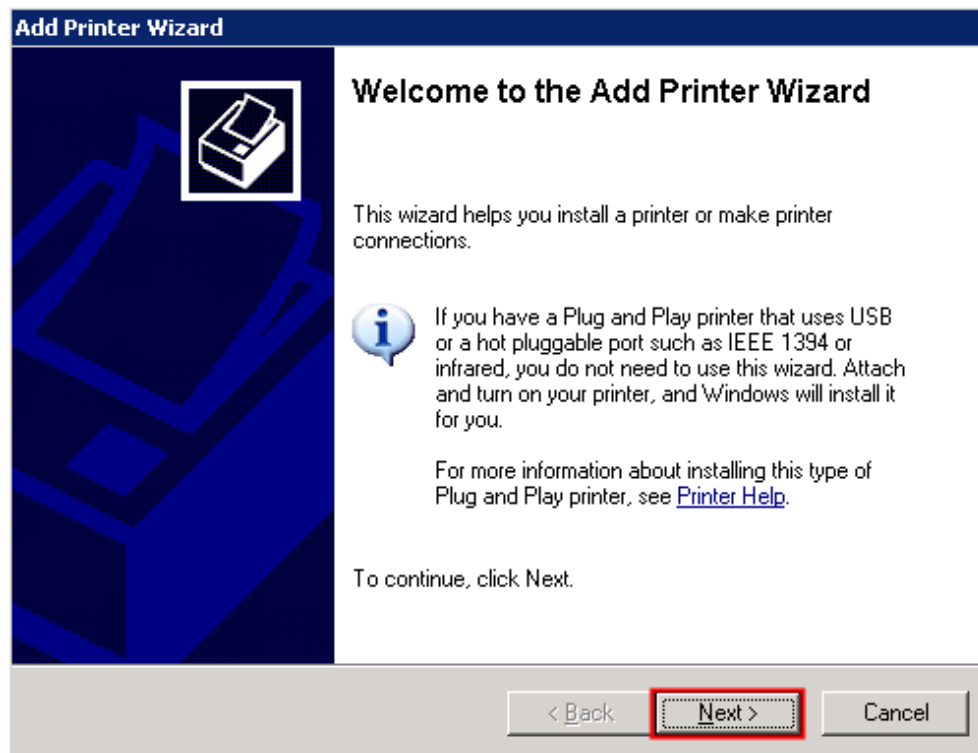
(new Windows versions see from page 9)

Start => Settings => Printers and Faxes

In the following window click „Add printer“.



Now the „Add Printer Wizard“ will start:






Choose „Local printer attached to this computer“ and deactivate the check „Automatically detect and install my Plug and Play printer“ if it's checked.

Add Printer Wizard

Local or Network Printer
The wizard needs to know which type of printer to set up.

Select the option that describes the printer you want to use:

- ☒ Local printer attached to this computer
- ☐ Automatically detect and install my Plug and Play printer
- ☐ A network printer, or a printer attached to another computer

 To set up a network printer that is not attached to a print server, use the "Local printer" option.

< Back **Next >** Cancel

Activate the option „Use the following port“ and choose „FILE: (Print to File)“ from the dropdown.


Add Printer Wizard

Select a Printer Port
Computers communicate with printers through ports.

Select the port you want your printer to use. If the port is not listed, you can create a new port.

☒ Use the following port: **FILE: (Print to File)**

Note: Most computers use the LPT1: port to communicate with a local printer. The connector for this port should look something like this:



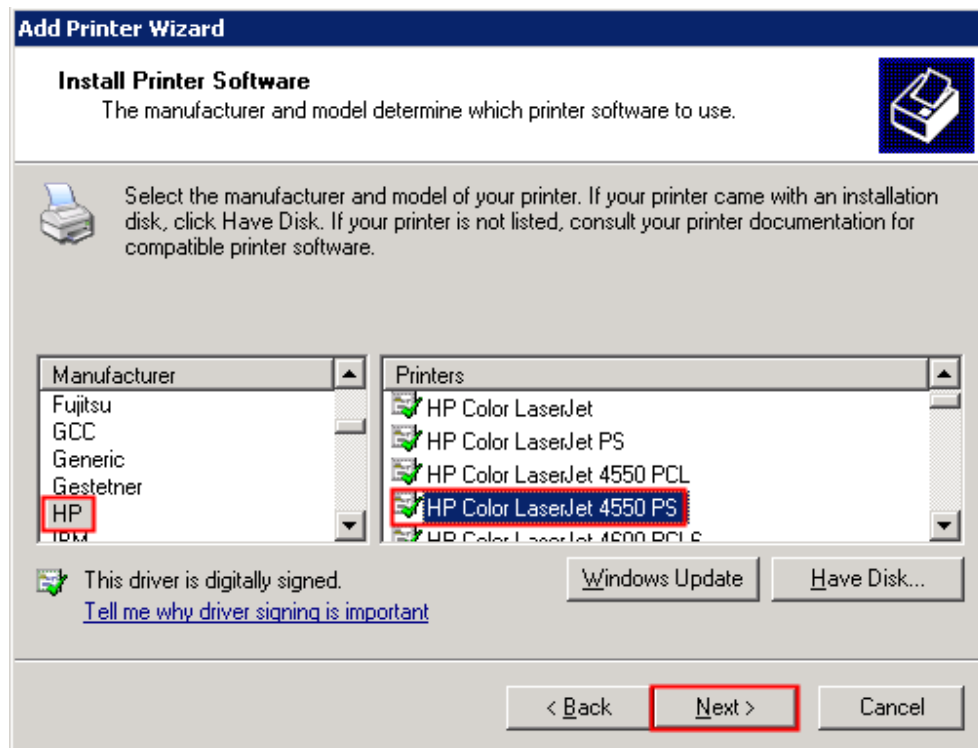
☐ Create a new port:
Type of port: Local Port

For more information about creating printer ports, see [Printer Help](#).

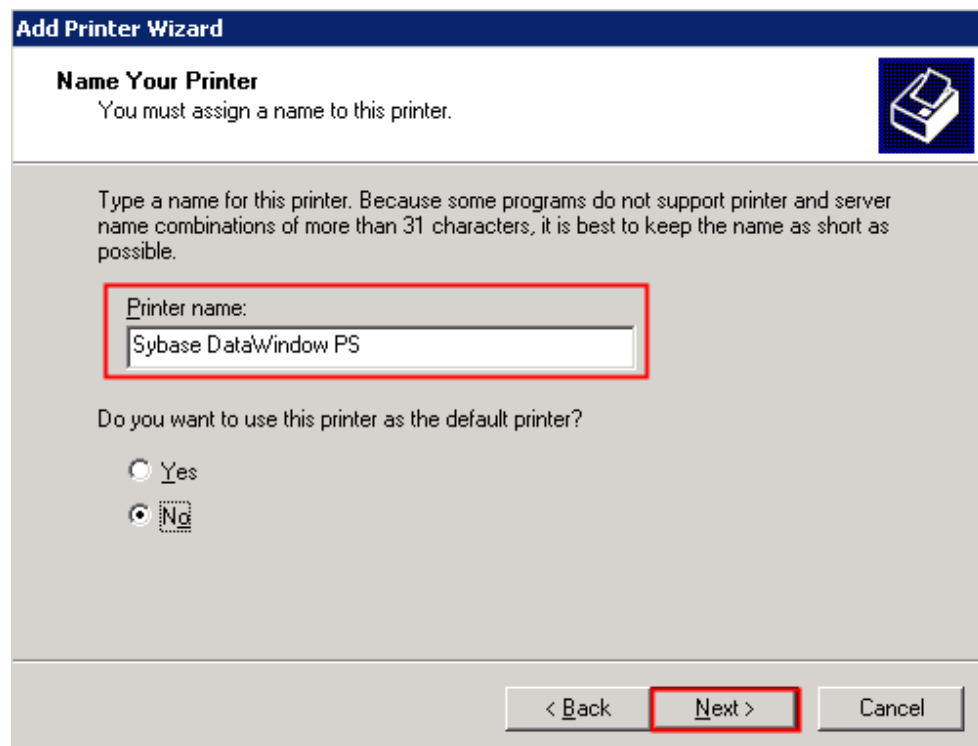
< Back **Next >** Cancel



Here you can choose any desired **PostScript** printer driver.
(e.g.. HP Color LaserJet 4550 PS)



Rename the printer to „**Sybase DataWindow PS**“
(please notice the case sensitivity)





Choose „Do not share this printer“

Add Printer Wizard

Printer Sharing
You can share this printer with other network users.

If you want to share this printer, you must provide a share name. You can use the suggested name or type a new one. The share name will be visible to other network users.

☒ **Do not share this printer**

☐ Share name: SybaseDa

< Back **Next >** Cancel

A test page is not necessary

Add Printer Wizard

Print Test Page
To confirm that the printer is installed properly, you can print a test page.

Do you want to print a test page?

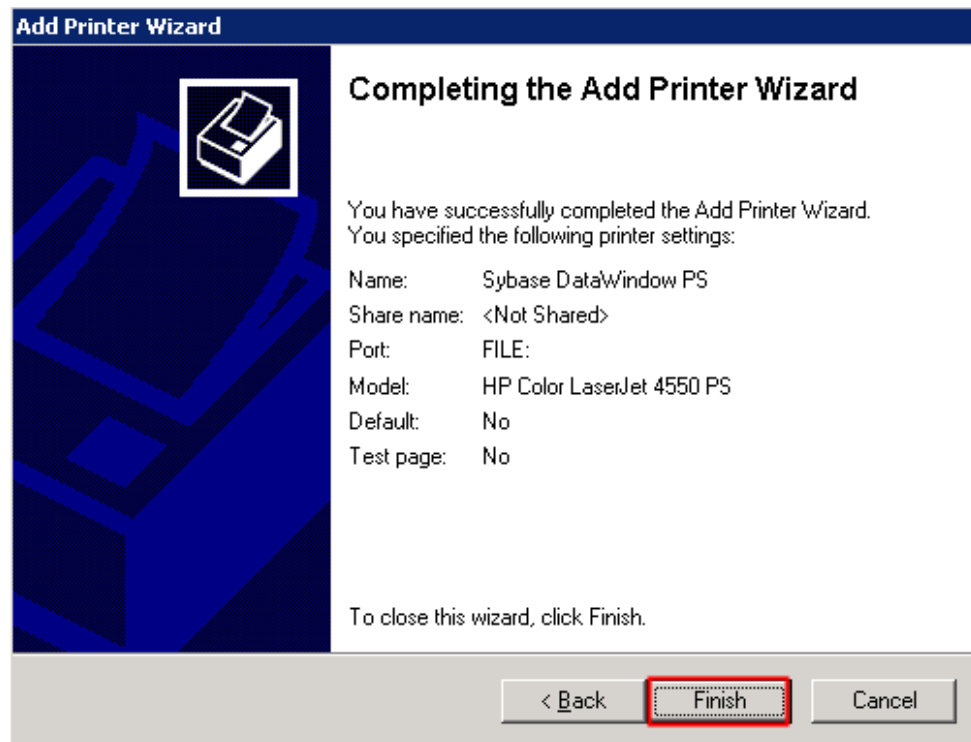
☐ Yes

☒ **No**

< Back **Next >** Cancel



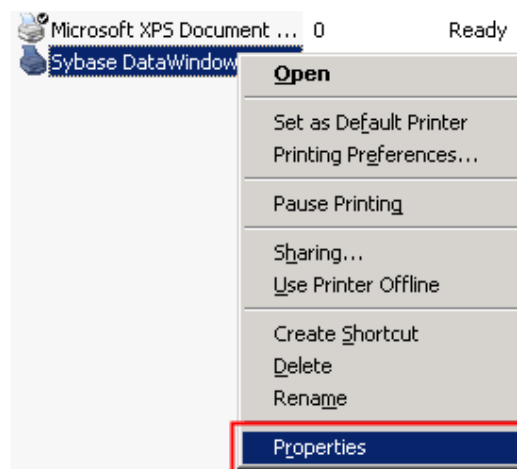
Click „Finish“ and be patient – the printer will be installed.



Now you should see the installed printer in the list.

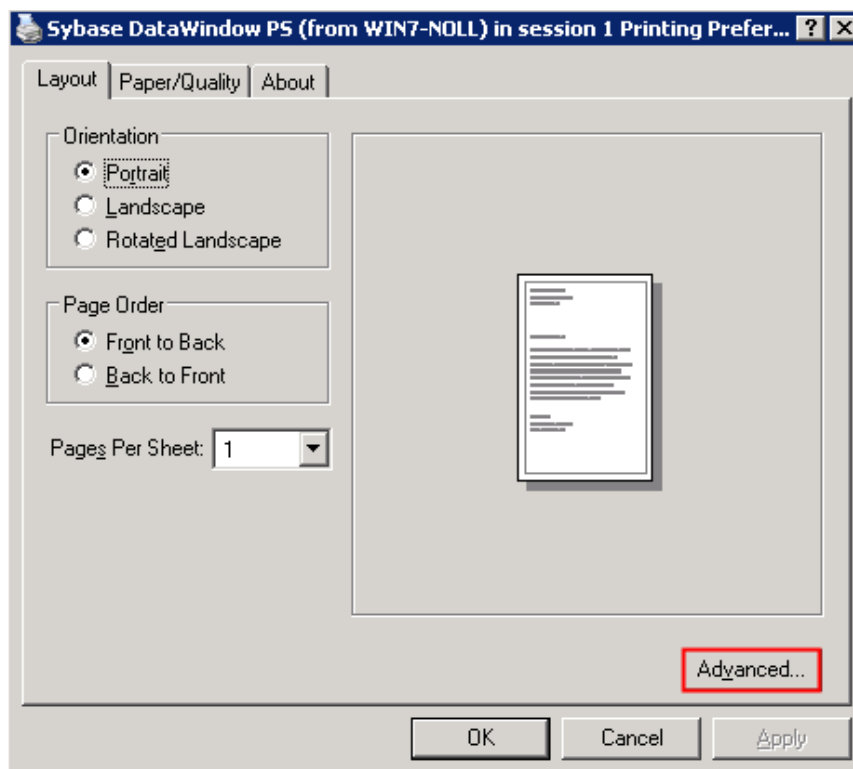
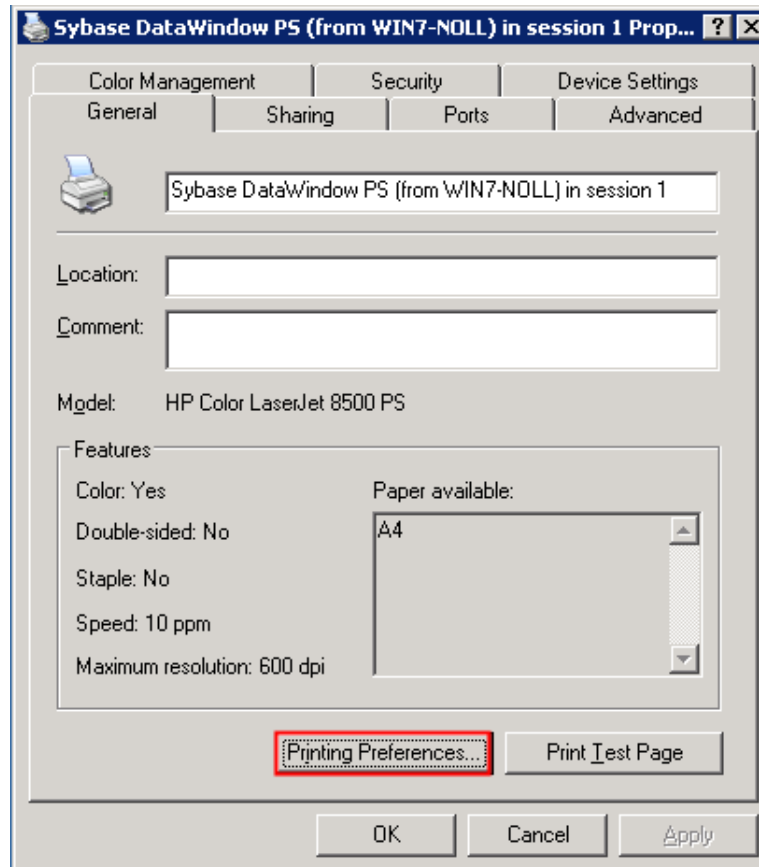
Name	Documents	Status	Comments
HP LaserJet 2100 PCL6 ...	0	Ready	
HP LaserJet 4050 Series ...	0	Ready	
Kyocera FS-3750 (KPDL-...	0	Ready	
Microsoft XPS Document ...	0	Ready	
Microsoft XPS Document ...	0	Ready	
Sybase DataWindow PS ...	0	Ready	

Now click on the printer with the right mouse button and choose „Properties“



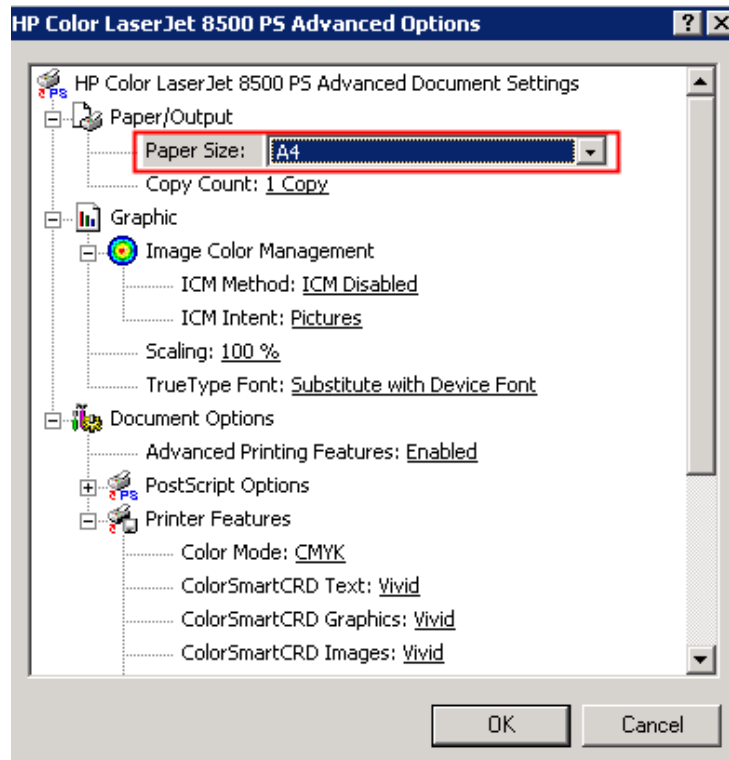


In the following window click „Printer Preferences“ and „Advanced“.

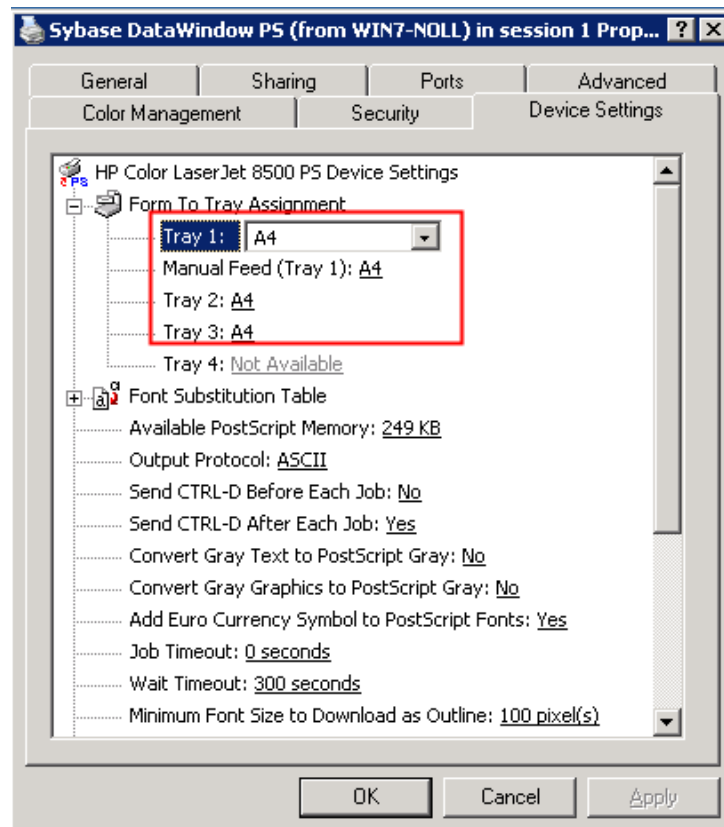




Choose „A4“ as paper size and confirm with „OK“.



Please check the settings under „Device Settings“ also for format „A4“.





Now you can test the direct export of PDF files from EuroFib for Windows.

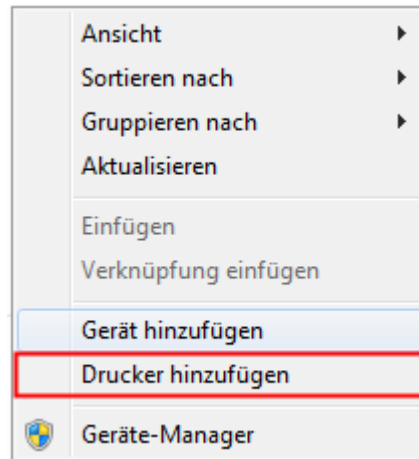
If the print out is not satisfying (maybe cutted margins and/or wrong colors) uninstall the printer or change the installed printer driver and repeat the steps with another PostScript driver.



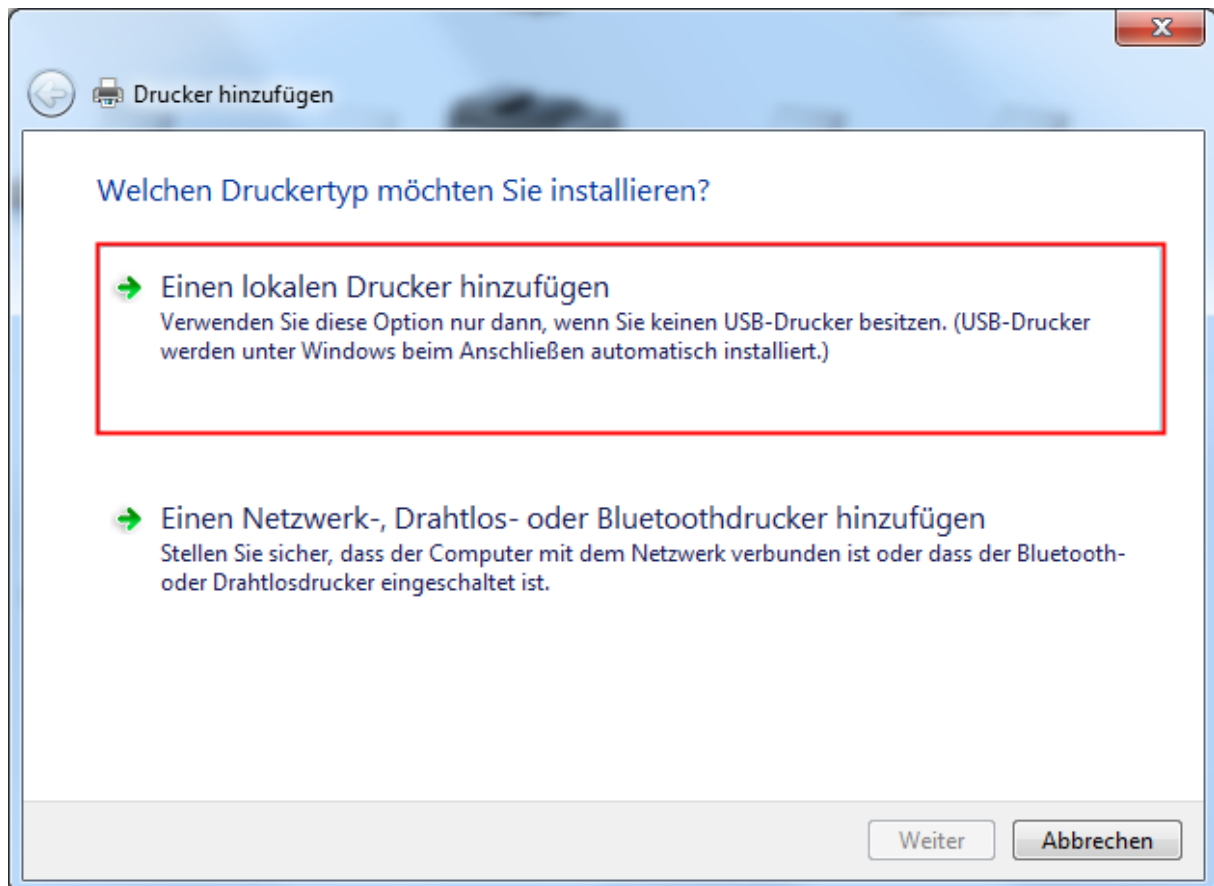
Windows VISTA, 7, 8, 10

Start => Hardware and printers

In the following window click „Add printer“.

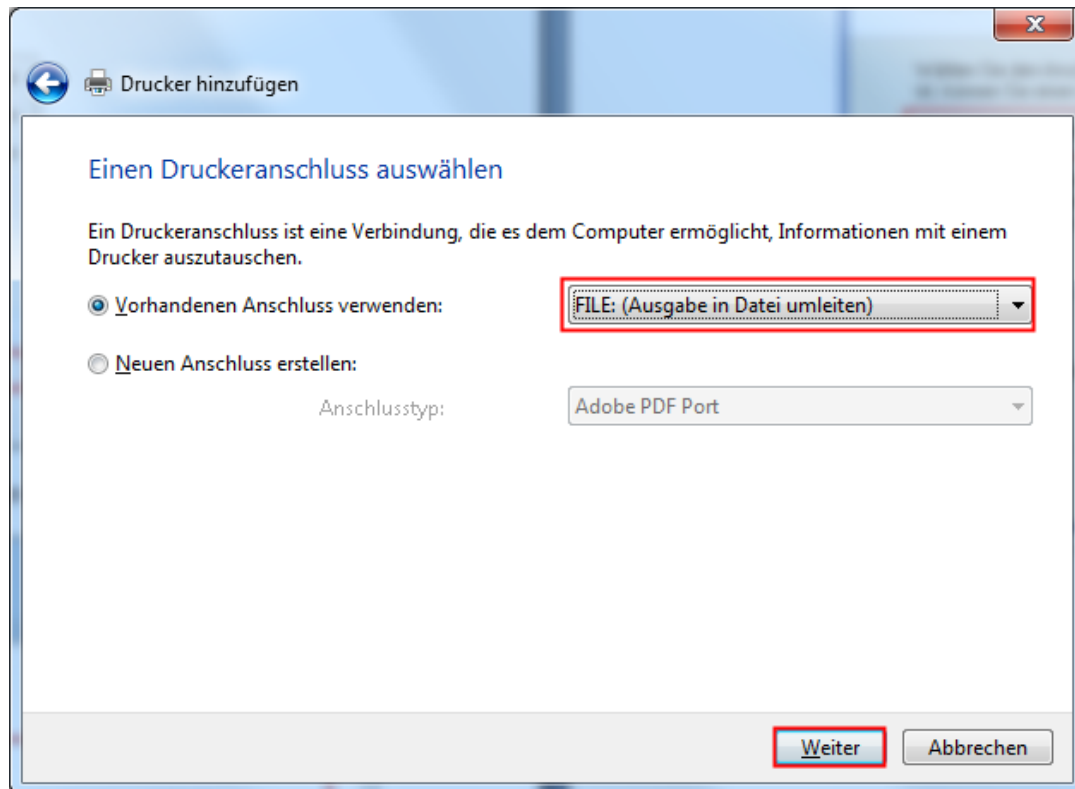


Now the „Add Printer Wizard“ will start. Choose „Add local printer“





Activate the option „Use existing port“ and choose „FILE: (Print to File)“ from the dropdown.



Here you can choose any desired **PostScript** printer driver.
(e.g. HP Color LaserJet 9500 PS)

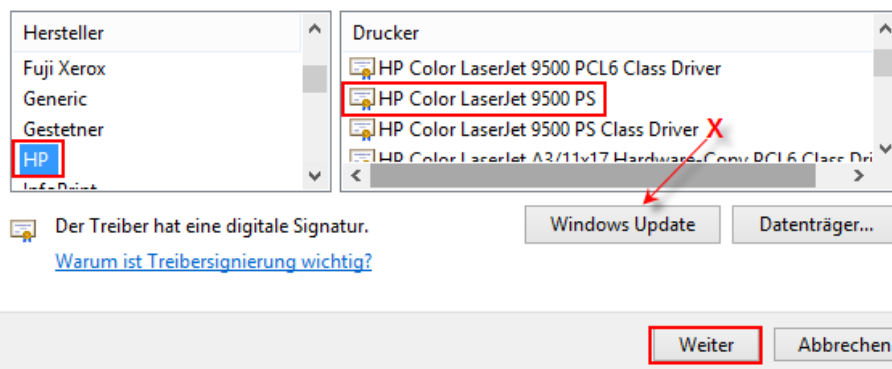
IMPORTANT: Please don't select a "PS Class Driver"! If you see only "PS Class Drivers" click "Windows Update" to get more drivers.

Den Druckertreiber installieren



Wählen Sie Ihren Drucker in der Liste aus. Klicken Sie auf "Windows Update", um weitere Modelle anzuzeigen.

Klicken Sie auf "Datenträger", um den Treiber mithilfe einer Installations-CD zu installieren.





Rename the printer to „**Sybase DataWindow PS**“
(please notice the case sensitivity)

Drucker hinzufügen

Geben Sie einen Druckernamen ein

Druckername: Sybase DataWindow PS

Dieser Drucker wird mit dem HP Color LaserJet 9500 PS-Treiber installiert.

Weiter Abbrechen

Choose „Do not share this printer“

Drucker hinzufügen

Druckerfreigabe

Wenn dieser Drucker freigegeben werden soll, müssen Sie einen Freigabennamen angeben. Sie können den vorgeschlagenen Namen verwenden oder einen neuen eingeben. Der Freigabename wird anderen Netzwerkbenutzern angezeigt.

☒ Drucker nicht freigeben

☐ Drucker freigeben, damit andere Benutzer im Netzwerk ihn finden und verwenden können

Freigabename:

Standort:

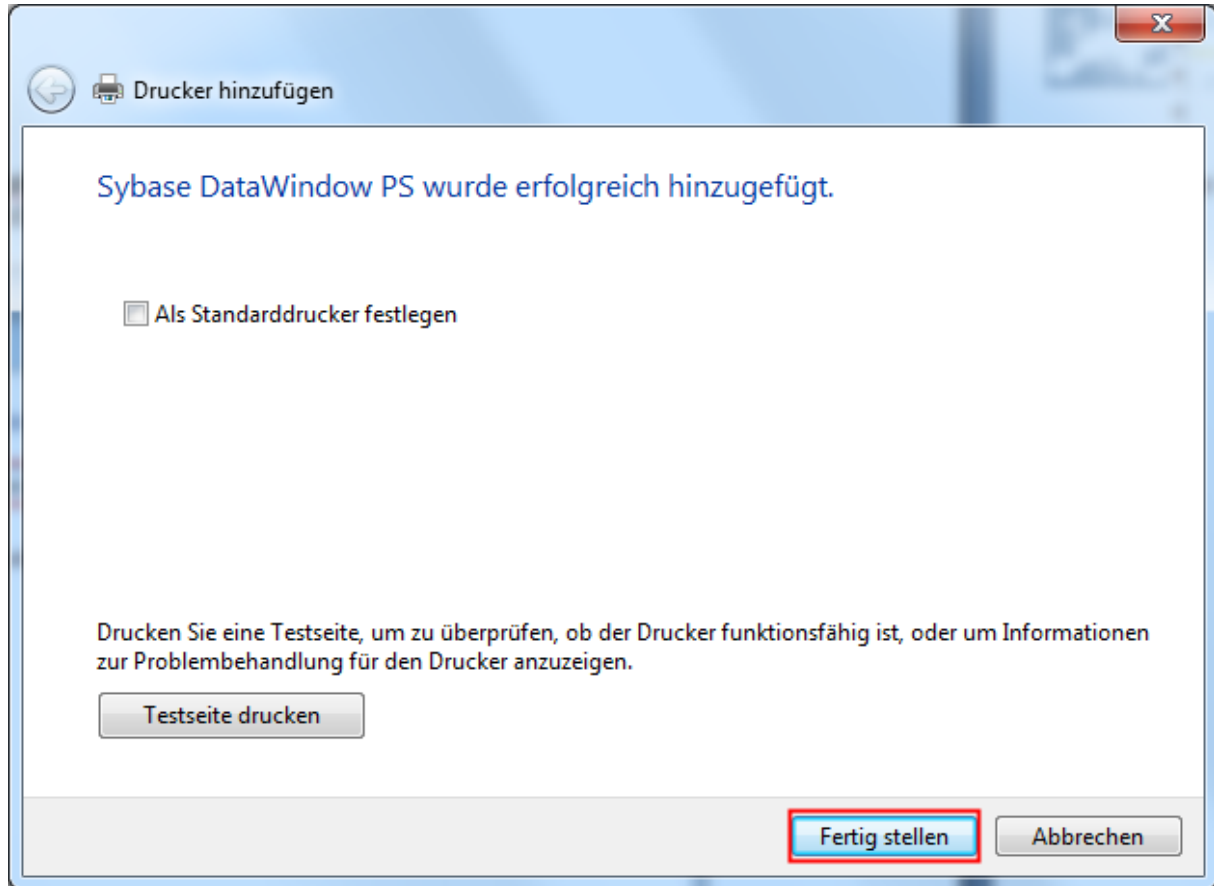
Kommentar:

Weiter Abbrechen

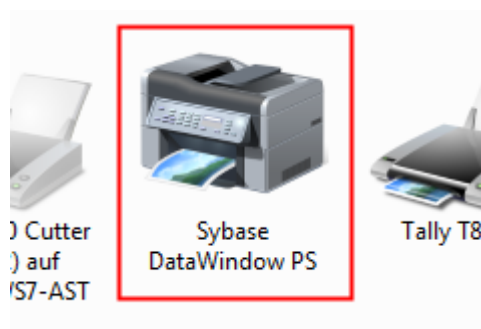


A test page is not necessary

Click „Finish“ and be patient – the printer will be installed.

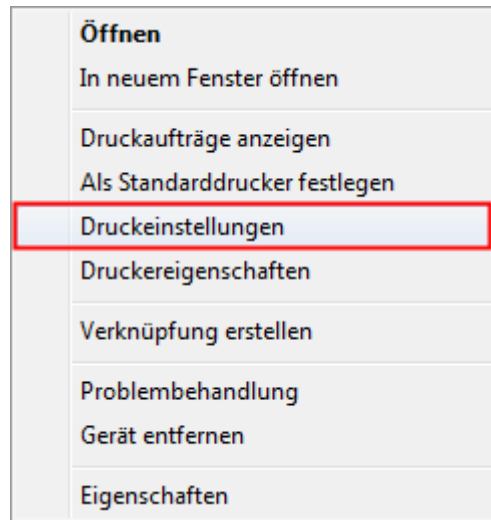


Now you should see the installed printer in the list.

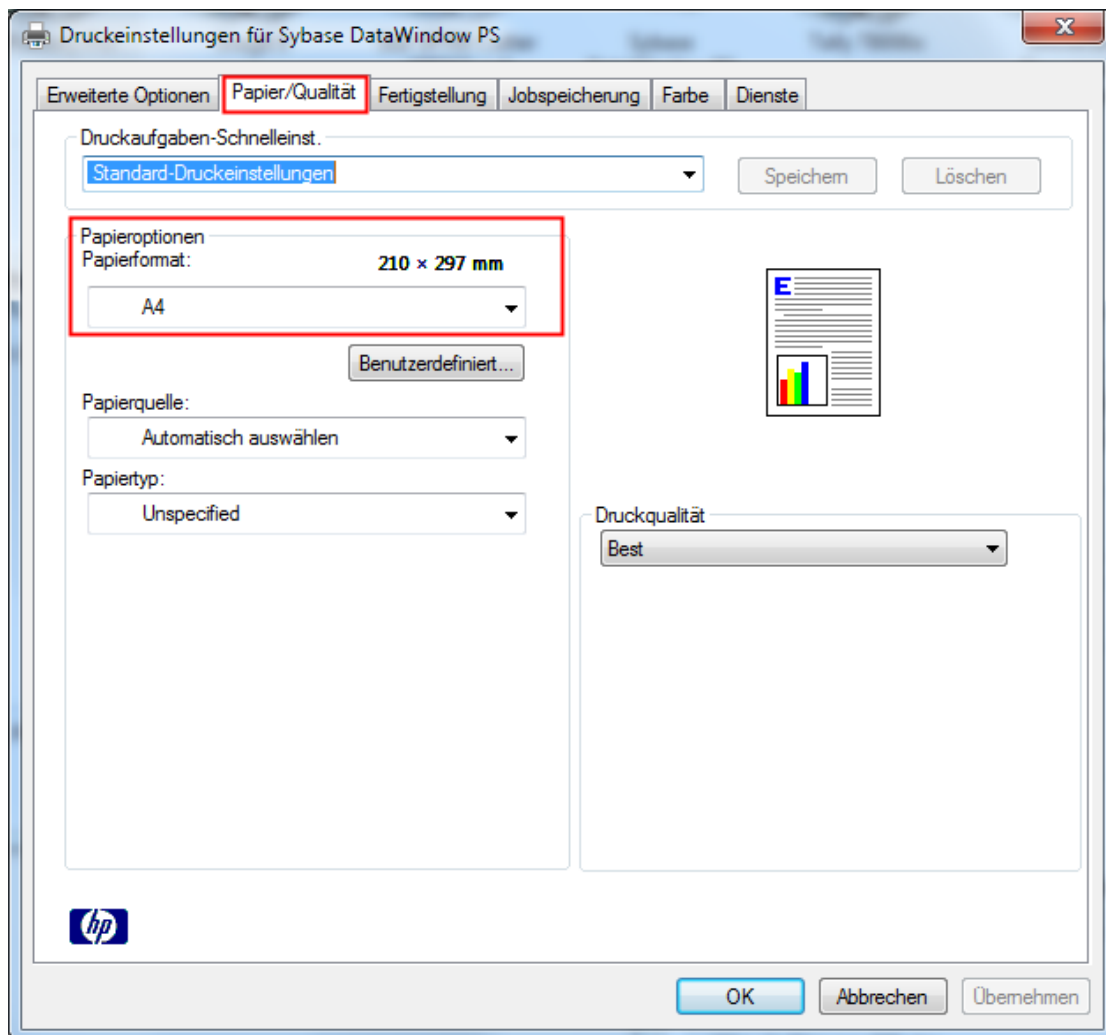




Now click on the printer with the right mouse button and choose „Printersettings“

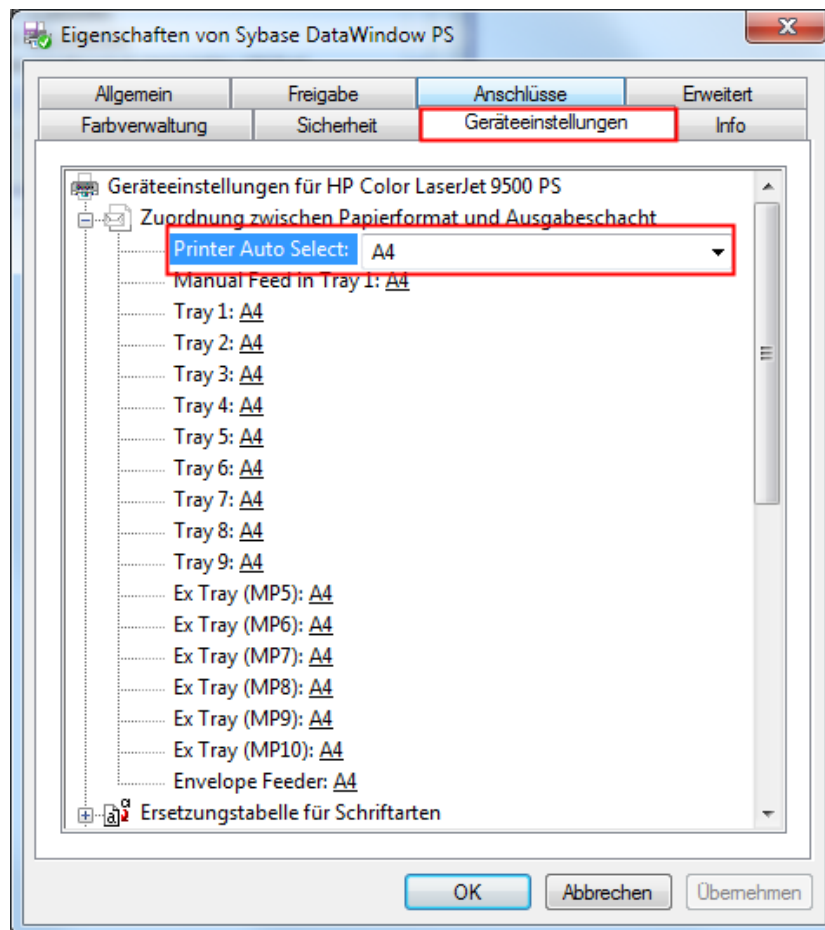
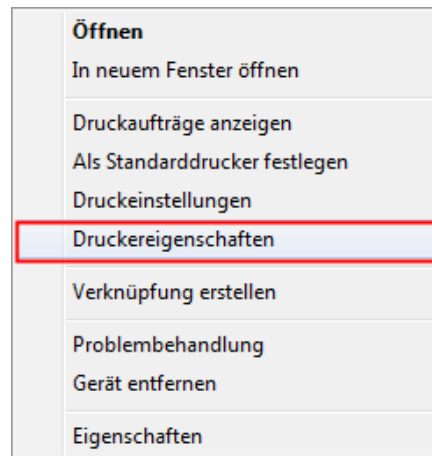


Choose „A4“ as paper size and confirm with „OK“.





Please check the settings under „Printer properties“ => „Device Settings“ also for format „A4“.



Now you can test the direct export of PDF files from EuroFib for Windows.

If the print out is not satisfying (maybe cutted margins and/or wrong colors) uninstall the printer or change the installed printer driver and repeat the steps with another PostScript driver.